




Manual de Operación Stacker eléctrico de triple Mástil MODELO:SQCDD-H1545 PRO



 **Warning:** ① Prior to operation, carefully read this operation manual and observe all warnings. Please always confirm that the safety components are undamaged.



② Never use this equipment before all the parts are installed.

Preface

I. Before using CDD-H series forklift, please carefully verify whether the products conform to your order requirements and working conditions, and whether technical documents such as product qualification certificate and operation manual are complete.

II. This operation manual shows you how to correctly use this forklift and gives you guidance about safety operation and preventive maintenance. Only in this way, you can fully exploit the functions of the forklift protect your safety.

III. As we keep updating and improving our products, some description in this manual may slightly deviate from your forklift. Due to special requirements of some clients, operation manuals of forklift may be different from each other, too.

If you have any questions, please contact our sales department or agents.

Warning ! ! !

For your and others' safety, please strictly observe following safety instructions:

If appropriate maintenance is ignored, certain potential safety hazards may occur during use of forklift. Therefore, sufficient maintenance equipment, professional maintainers and maintenance plans must be provided.

Maintenance and inspections for modification shall be conducted according to following provisions:

Maintenance, lubrication and inspection plans for forklift should be conducted strictly.

The maintenance, lubrication and inspection personnel for forklift must be certified for qualification and approved by relevant authorities.

Following operations should be conducted before leaving forklift:

- ① Do not park it on a slope.
- ② Completely lower the pallet fork.
- ③ Inspect whether the multiple valve handle is reset properly and whether the compression spring is normal.
- ④ Press down the emergency stop switch.
- ⑤ Turn the switch lock to stop position and remove the key.

Before operating:

- ① Operators should be on operation position.
- ② Place the operation handle on its original position.
- ③ Prior to operation, inspect whether regular functions as lifting, steering, speed control and braking are operational.

1. Try to avoid flame during operation, and the firefighting devices must be provided on the forklift. It is strictly forbidden to use open fire to inspect electrolyte or other oil and whether the electrolyte is leaking.

2. Braking, manipulation, control and safety devices should be inspected and maintained regularly to maintain good performance.

3. All nameplates and safety signs on forklift should be cleaned regularly to keep their content legible.

4. Relevant hydraulic systems should be inspected regularly based on operation conditions. Oil cylinders, hydraulic valves and other hydraulic elements should be inspected for leakage.

5. The forklift must be stored in clean and dry environment to minimize fire risk.

6. Pallet fork should be lifted 300mm above ground and inclined back fully during driving. During operation, personnel are not allowed to stand at two sides of forklift and loads should be placed on the fork evenly. Uneven loading is strictly forbidden.

6. When loads are approaching or on the ground, its mast should not be contracted so that loads will not contact with frame to cause unnecessary loss.

7. Without approval by the manufacturer, user should not change or increase load of forklift. If approved, nameplate and safety signs on forklift should be changed accordingly.

Contents

1. Usage Regulation	1
2. Main Technical Parameters	2
3. Operation Guideline	6
3.1 Description on application scope of forklift	4
3.2 Nameplate	6
3.3 Safety regulations on forklift operation	6
3.4 Operation specification	7
3.4.1 Inspection before operation:	7
3.4.2 Forklift operation:	7
4. Operation and Maintenance of Battery and Charger	12
4.1 Use of charger	13
4.2 Battery charging	13
4.3 Battery replacement:	14
5. Maintenance Guideline	15
5.1 Operational safety and environmental protection	15
5.2 Safety stipulations on maintenance and servicing	15
5.3 Maintenance and inspection	16
5.4 Replacement of oil in hydraulic system	17
5.5 Re-commissioning	17
6. Carrying and Warehousing	17
6.1 Precautions before storage:	17
6.2 Precautions during storage:	18
6.3 Re-commissioning after storage:	18
6.4 Regular safety inspection for forklift or during abnormal condition	18
6.5 Equipment scrapping and waste disposal methods	19
7. Schematic Diagram	19
8. Electrical Schematic Diagram	21
9. Hydraulic Schematic Diagram	
10. Quick wear parts	

1.Usage Regulation

This is a hydraulic lifting multi-functional forklift driven by a battery. Its features such as compact structure, small body, light weight, easy operation, flexible movement, stable speed rising, safe& reliable and easy to maintain, especially design of multiple valve, greatly facilitate lifting and lowering operations for users.

This forklift is an ideal tool for goods loading/unloading in warehouse, workshop and plant, especially in narrow passage and warehouse. It can also go into elevators and building floor to operate.

The forklift introduced in this operation manual is a ground transport equipment which is applicable for goods lifting and transport. It should not be used for personnel transportation. Fork truck should be used, operated and maintained strictly according to the regulations in this operation instruction. Any other usage of the forklift is against the regulations and may cause personal injury and damage to forklift or other property. Most important of all, overload caused by overweight or uneven loading must be prevented. Max loading limit specified on equipment nameplate or loading schematic diagram must be observed. This forklift should not be used in the areas with explosion or fire risk or corrosive/dust-ridden areas.

Obligations and responsibilities of equipment users: In this operation manual, “Equipment User” refers to any natural person or legal person directly utilizing this forklift or entrusting others to use this forklift. Under special conditions such as renting and leasing, “Equipment User” represents the undertaker of specified operation obligations based on the contract terms agreed by equipment owner and user.

Equipment user must ensure that the forklift is only used for specified purposes and to timely eliminate all dangers possibly endangering health or life of the user or a third party. In addition, the equipment user must also strictly observe accident prevention regulations, other safety regulations as well as equipment operation, maintenance and repair standards. The equipment user must ensure that all operators carefully read and fully understand the content in this operation manual.

If this operation manual isn’t observed, our quality guarantee will become void automatically. In case client and user or a third party operate the equipment improperly without consent by client service department of the factory, we will not be liable to any losses caused thereby.

2.Main Technical Parameters

Figure 1

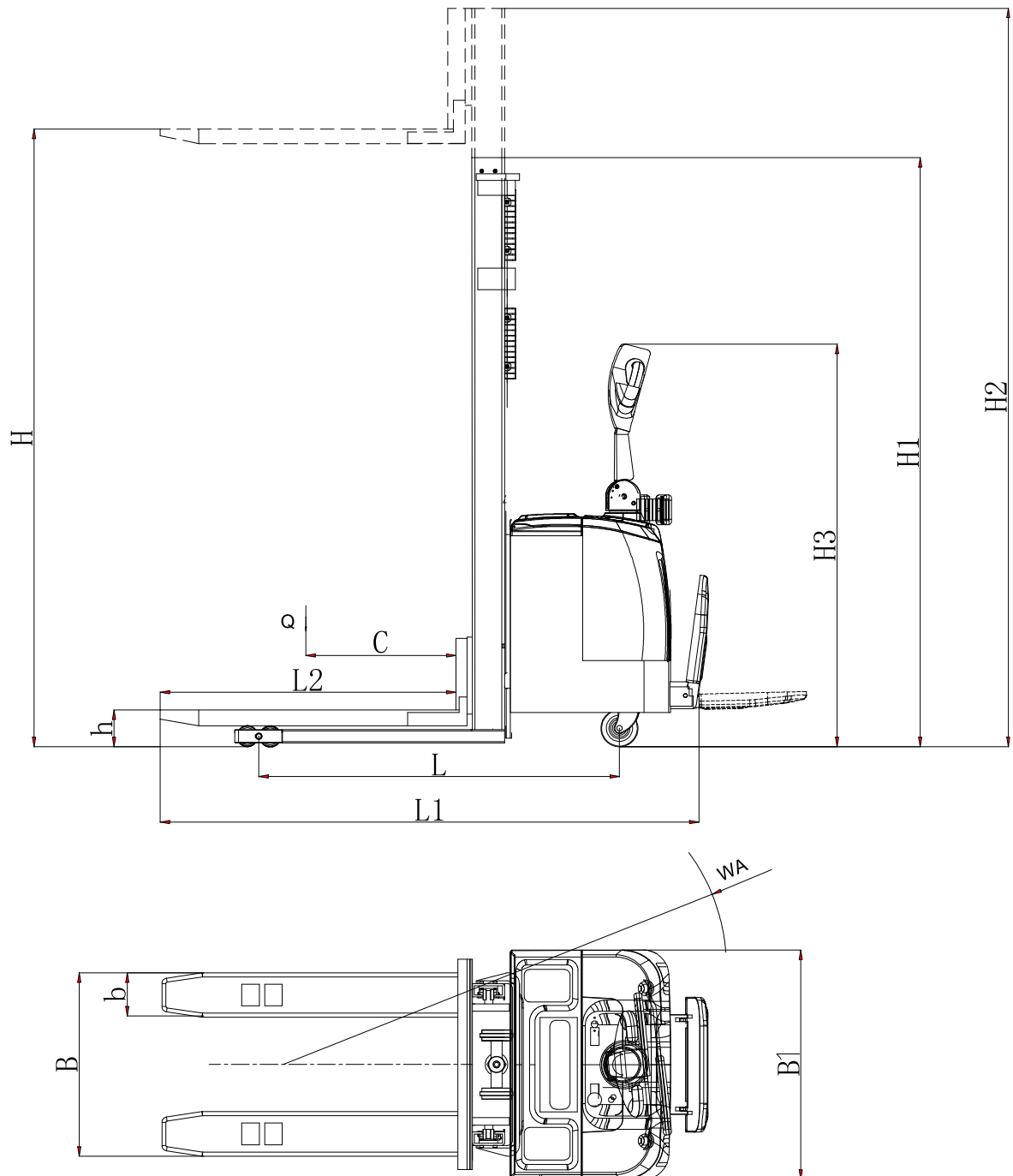


Table 1

CDD-H ELECTRIC FORKLIFT						
General	1	Model		CDD-H10	CDD-H15	CDD-H20
	2	Type		FULL ELECTRIC	FULL ELECTRIC	FULL ELECTRIC
	3	Rated capacity	kg	1000	1500	2000
	4	Fork type		Covering	Covering	Covering
	5	Load center	mm	500	500	500
	6	Operator type		Standing	Standing	Standing
	7	Wheel type		PU	PU	PU
	8	Driving wheel*2		Φ252*88	Φ252*88	Φ252*88
	9	Front wheel*4		Φ80*70	Φ80*70	Φ80*70
	10	Balance wheel		Φ115*55	Φ115*55	Φ115*55
	11	Balance wheel base	mm	640	640	640
	12	Front wheel base	mm	420	420	420
Dimensions	13	Lifting height		2000/2500/3000/3500	2000/2500/3000/3500	2000
	14	Fork size	LxW	mm	900x165	900x165
	15	Overall Length(With fork)		mm	1750	1750
	16	Overall width		mm	800	800
	17	Overall height		mm	1580/1830/2080/2280	1580
	18	Brake type			electric	electric
	19	Turning Radius		mm	1688	1688
	20	Travelling Speed(loaden/unload)		km/h	4.2/5.6	4.2/5.6
	21	Lifting Speed(loaden/unload)		km/h	80/100	80/100
	22	Falling Speed(loaden/unload)		km/h	150/120	150/120
	23	Max.Climbing ability(loaden/unload)		%	6/10	6/10

24	Battery		24V/240Ah	24V/240Ah	24V/240Ah
25	Lifting motor power	kw	2.2	2.2	2.2
26	Driving motor power	kw	1.2	1.2	1.2
27	Net weight	kg	720/740/760/790	740/760/780/800	760

*More detail spc please check the catalog.

* The factory reserves the right to modify the product design and specification without prior notice. Refer to samples for specific parameters.

Figure 2

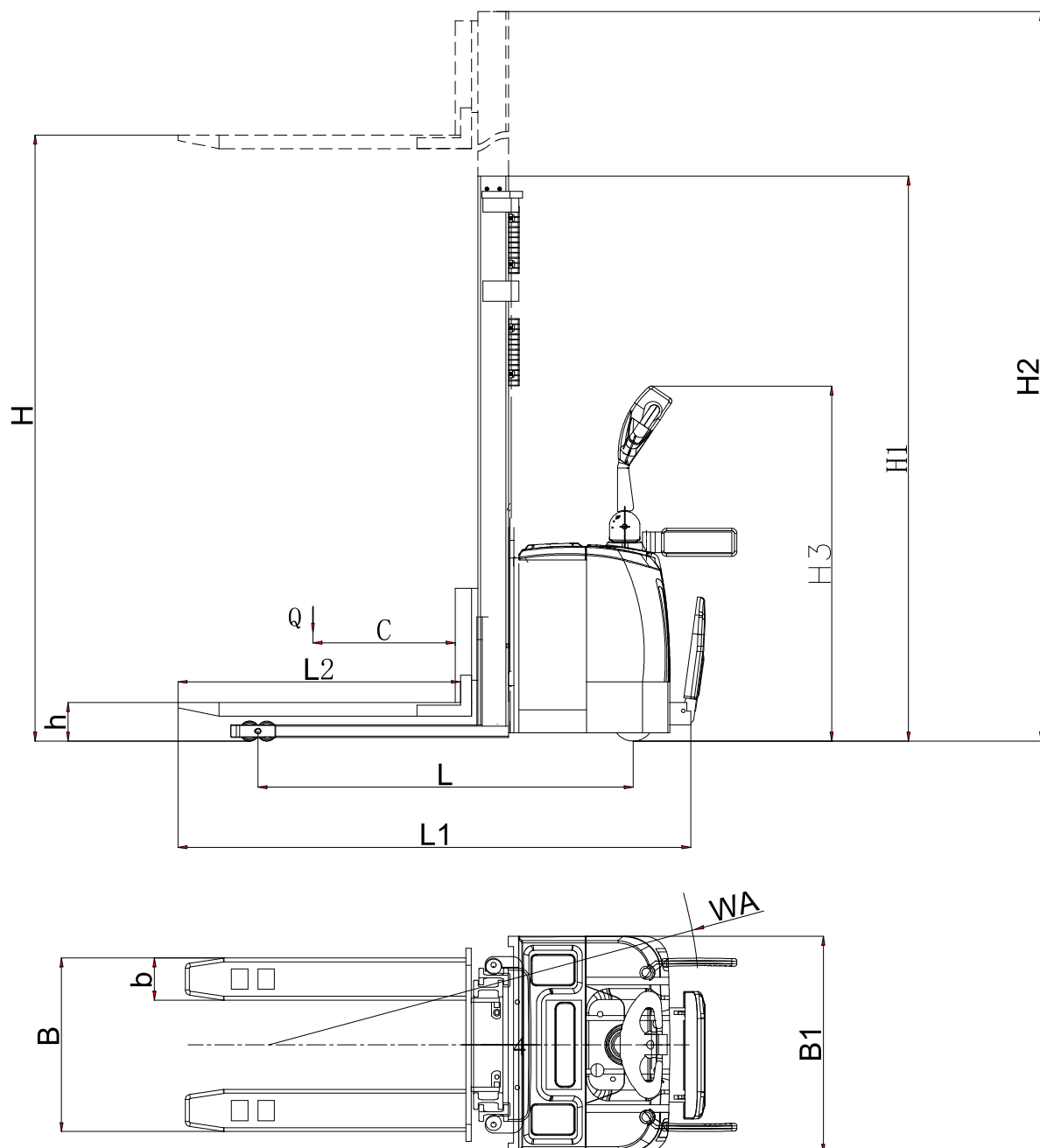


Table 2

CDD-H15(SMJ) ELECTRIC FORKLIFT					
General	1	Model			CDD-H15(SMJ)
	2	Type			FULL ELECTRIC
	3	Rated capacity		kg	1500
	4	Fork type			Forging
	5	Load center		mm	500
	6	Operator type			Standing
	7	Wheel type			PU
	8	Driving wheel			Φ252*88
	9	Front wheel			Φ80*70
	10	wheel base		mm	1370
Dimensions	11	Lifting height		mm	3600/4000/4500/5000
	12	Fork size	LxW	mm	900x110
	13	Overall Length(With fork)		mm	1750-1920
	14	Overall width		mm	1016
	15	Overall height		mm	1780/1920/2080/2240
	16	Brake type			electric
	17	Slope Angel(Front/Backward)			5°/6.5°
	18	Turning Raduis		mm	2230
	19	Travelling Speed(loaden/unload)		km/h	4.2/5.6
	20	Max.Gradeability(loaden/unload)		%	6/10
	21	Lifting Speed(loaden/unload)		mm/s	80/100
	22	Falling Speed(loaden/unload)		mm/s	150/120
	23	Lifting Motor			3.0
	24	Driving Motor			1.2
	25	Battery			24V/280Ah
	26	Net weight(With battery)		kg	1100

*More detail spc please check the catalog.

* The factory reserves the right to modify the product design and specification without prior notice. Refer to samples for specific parameters.

3.Operation Guideline

3.1 Description on application scope of forklift

This series of forklift is applicable on smooth ground, and the rated load is marked in details on the nameplate.

Environmental temperature: Applicable in 5℃-40℃ environment; if the forklift is used in environment with temperature lower than 5℃ for long term, or inside refrigerator or under the condition of extreme temperature and humidity change, the special equipment should be installed additionally, and the permission by manufacturer should be obtained.

3.2 Nameplate

No.	Name	No.	Name
1	Product Model	6	Load (Kg)
2	Load Center (mm)	7	Length of Fork (mm)
3	Lifting Height (mm)	8	Battery
4	Dead Weight (Without battery) (Kg)	9	No.
5	Date of Delivery	10	License No.

Please provide the No. of forklift (9) when consulting forklift relevant issues or ordering the spare parts.

3.3 Safety regulations on forklift operation

Driving qualification: Forklift should be operated and driven only by specially trained technicians. Operators have to pass the test for equipment using method and master skills on equipment driving and load handling, and obtain official appointment from equipment user or its entrustor.

Drivers' rights, obligations and CDD-He of conduct: Driver should know his or her rights and obligations, go through instructions and trainings on operation and use of ground transport equipment and familiarize all content in this operation manual. User should endow the operators their due rights. If operator needs to walk around frequently during forklift operation, he or she should wear protective boots.

Irrelevant personnel are strictly forbidden to operate the equipment: During forklift driving, driver is fully responsible for this equipment. Irrelevant personnel are strictly forbidden to drive or operate the forklift, and the forklift should not be used to carry or lift personnel.

Equipment damage and defects: if any damage or other defects are found on the forklift or its accessories, be sure to immediately report the conditions to the supervisor. Forklift with defective operation performance, for example: tire wear or brake malfunction should not be used without proper maintenance.

Equipment maintenance: Without special training and permission, driver should not conduct any maintenance or modification work to forklift. Driver should never

bypass or adjust safety devices and switches without authorization.

Dangerous area: Dangerous area refers to area where personnel may get injured. These dangers mainly come from forklift itself, bearing parts (such as fork teeth and accessories, etc.) as well as handling and lifting of loads.

Dangerous area also includes places where lowering/falling of working devices or bearing structure may cause danger.

Irrelevant personnel should be kept away from dangerous area, and the warning signs should be hung inside dangerous area. If irrelevant personnel refuse to leave dangerous area, forklift should be stopped immediately.

Safety devices and warning signs: be sure to strictly observe the regulations on safety devices, warning signs and warning instructions in this manual.

3.4 Operation specification

3.4.1 Inspection before operation:

If forklift is damaged during transportation, it should not be used. Immediately contact the agent.

Forklift has been filled with lubricating oil prior to shipping, and hydraulic oil has been filled in the hydraulic system.

If battery is equipped on forklift, it has been charged properly.

Forklift should be checked carefully for problems before operation.

Check the forklift completely, especially whether the wheels and bearing parts are damaged.

Check if the emergency stop button is on.

Insert the key into switch lock and turn it right to stop position.

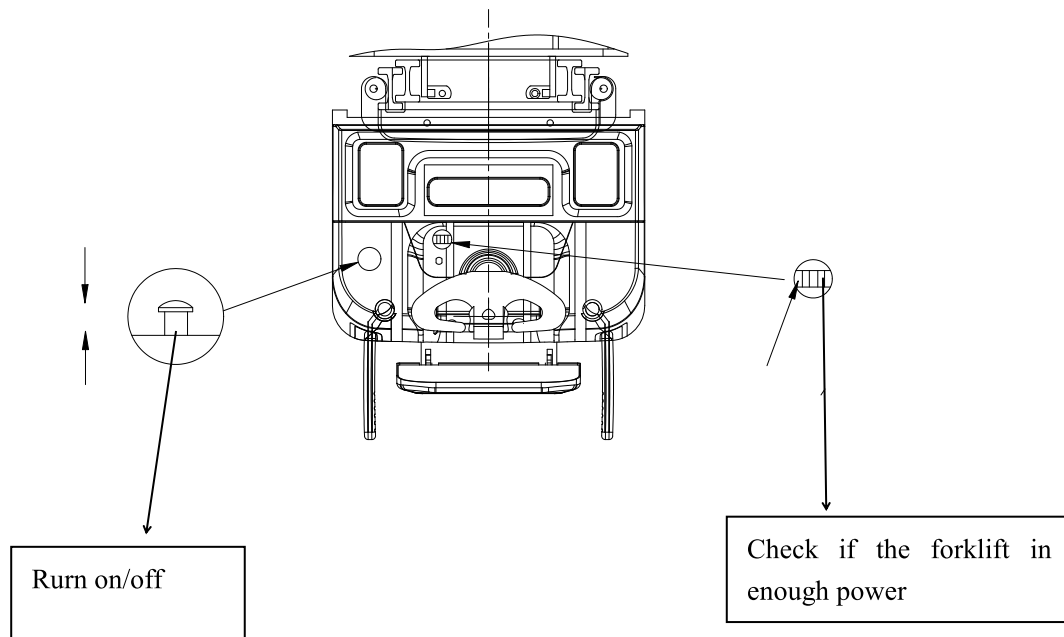
Voltmeter displays current charging status and running hours of battery.

Inspect the braking performance of operating lever.

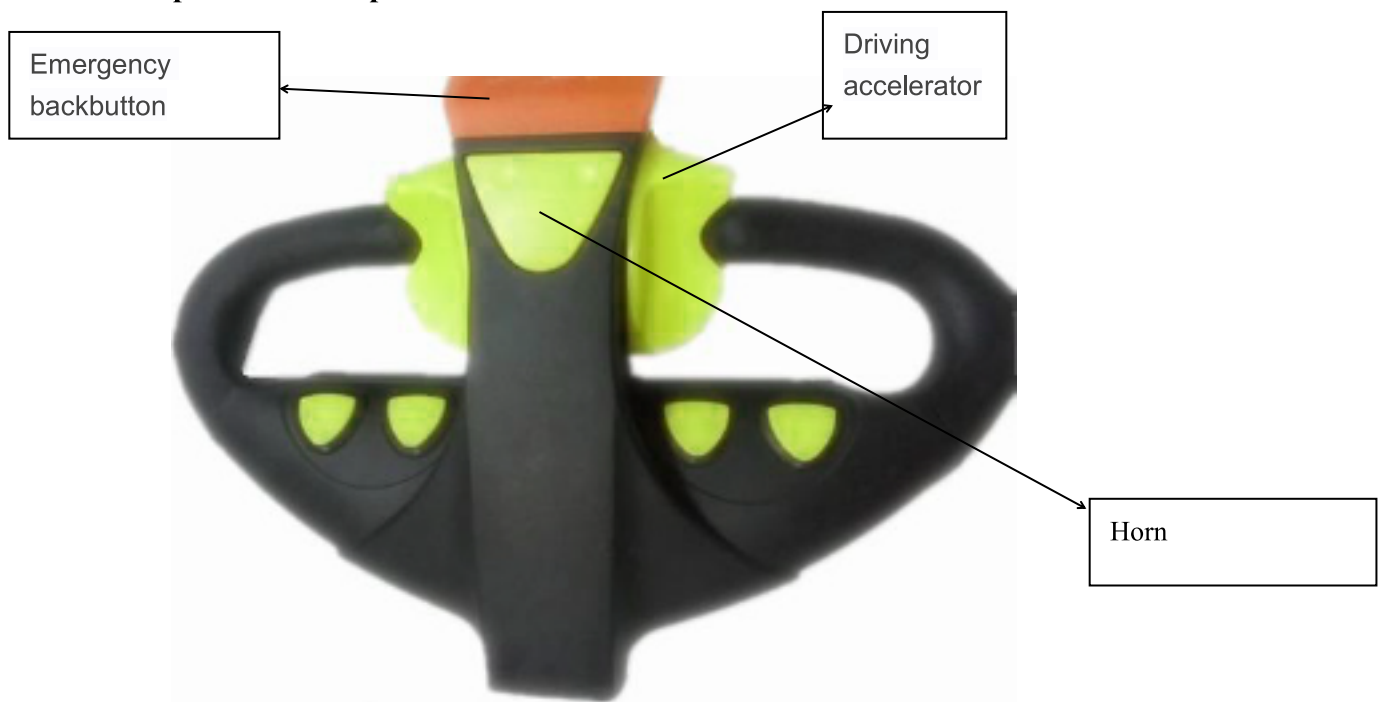
3.4.2 Forklift operation:

Before operation or load lifting, driver should ensure that no person is in dangerous area.

Switch on ,check whether battery volume is sufficient. It can be used immediately if battery is fully charged.



Components description:



- Recharge the battery if volume is low. Do not operate under low electric volume to avoid damaging the battery.
- The forklift can only drive on the hard pavement with gradient $< 2.5\%$. Do not operate on oil contaminated ground to avoid slipping.
- Forklift should be kept some distance from surrounding personnel when loading/unloading goods. Special care should be taken when loads are too high or too heavy.
- Please take loads according to the load curve strictly. Never overload the forklift to avoid equipment damage or personnel injury or death.
- The fork should be kept at the lowest position during driving. Do not lift loads during driving. Reduce the driving speed when taking turns on level ground or driving up/down slopes. Do not turn around or take turns on slopes or danger may occur.
- Lower the fork to the lowest position after operation. Forklift should not be parked on slopes. Shut off power and remove the key at last.

1) Regulations on operation safety:

Precautions during driving: Operator should choose driving speed according to site conditions. Keep low speed when taking turns, driving in narrow alleys, passing swing doors or when sight is blocked. Sufficient braking distances should be kept from the forklift ahead and forklift should be controlled timely. In dangerous areas or areas where sight is blocked, abrupt stopping of forklift is not allowed.

Driving up or down slopes: Driving up or down slopes should be on specified routes. Road should be kept clean, not slippery. Technical performance of forklift should be safe and reliable. Do not drive with the fork forward when carrying loads up slopes. Drive the forklift reversely when driving down slopes. Do not take turns, drive diagonally or park the forklift midway. Keep low speed when driving down slopes and always be prepared to brake.

Conditions necessary for goods to be stacked: Operator should carefully inspect the goods to ensure no danger should occur. Prior to stacking, fix the goods carefully. If the goods may overturn or fall down during stacking, be sure to install appropriate protection devices (such as guardrail).

2) Braking

Emergency braking

After pressing down the Emergency stop switch, all electric functions will be halted.

Forced braking

Forced braking will be activated when operation lever is released. Operation lever will automatically turn to upper braking zone (B); or press the operation lever to lower braking zone (B) on the bottom, braking will be forced, too.

Notice: If the operation lever moves slowly entering braking position, cause has to be found and eliminated. If necessary, replace the air pressure spring!

Regenerative braking

After releasing the driving switch, it will automatically return to initial position (speed is 0), and the forklift begins to enter into regenerative braking status slowing down. When speed decreases under 1Km/h, brake starts to work to stop the motor. (principle of the brake: brake when circuit is connected and release when disconnected)

Notice: After releasing the driving switch, if it can't return to initial position or the returning speed is very slow, causes must be found and eliminated. If necessary, replace the driving switch or operation handle.

Plug braking

Driving switch can be shifted to reverse direction during driving, and forklift will be braked through reverse current until it drives reversely.

Notice: You can put operation lever on braking position in emergency to force braking or adopt reverse connection braking according to specific condition.

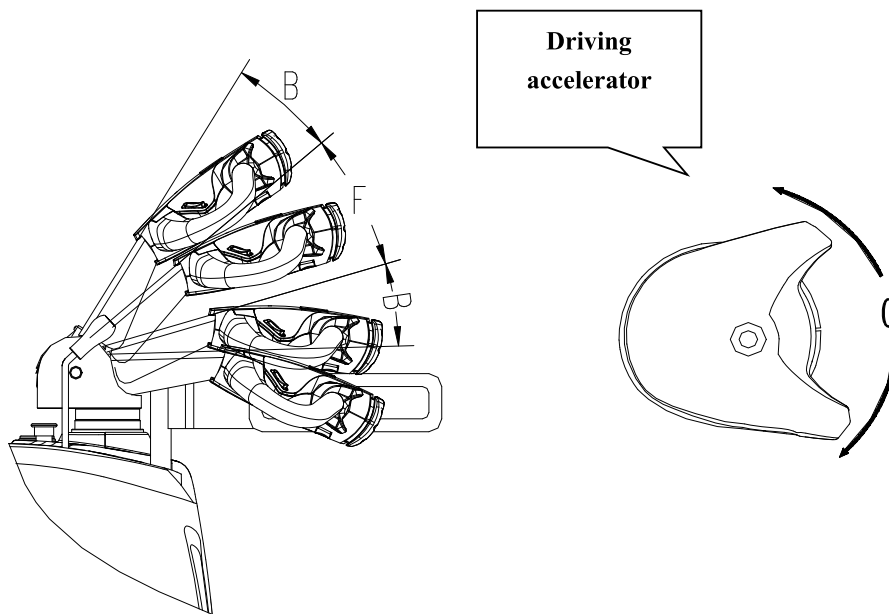
3) Driving

Put the operation handle into driving zone (F).

Adjust the driving accelerator to required driving direction (forward or backward).

Forklift can only drive at low speed when safety arm is not enabled.

Prior to accelerating the forklift, ensure that all covers on the forklift have been closed and locked properly. When the forklift passes through a swinging door or similar areas, take care not to let door leaf contact with crush-proof button.

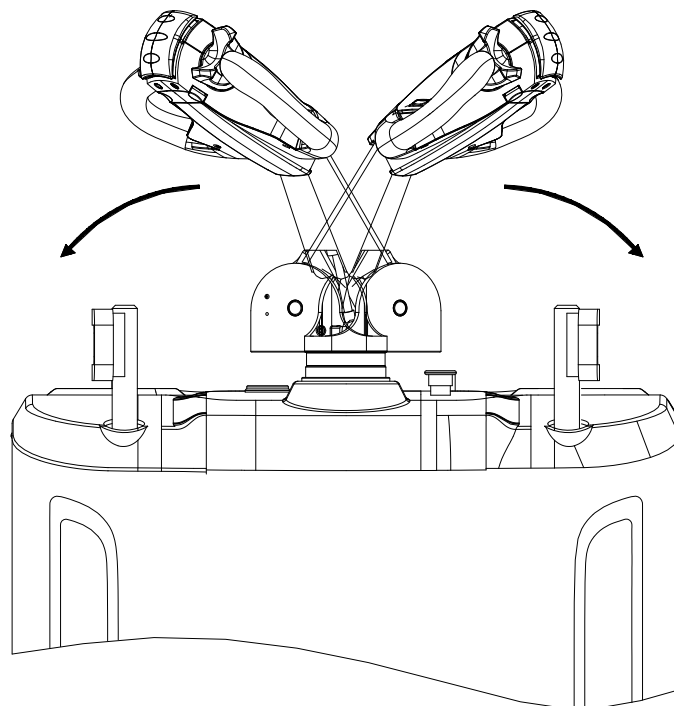


Driving on slopes

Do not drive with the fork forward when carrying loads up slopes. Drive the forklift reversely when driving down slopes.

4) Steering

According to required direction, turn the operation handle leftward or rightward.



Left Right

Goods picking and storage

Notice: Before picking, operator should ensure that the goods are stacked properly, and the their weight doesn't exceed the forklift's rated loading capacity. Long goods should not be picked laterally.

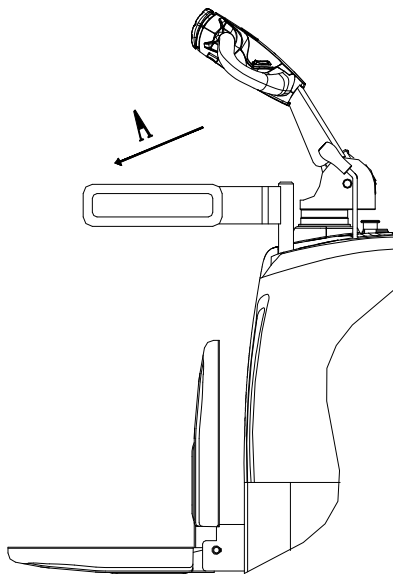
5)Lifting

Operate the lifting handle until reaching required lifting height, then release the handle.

Notice: When the bearing components reach the end stop position, immediately release the lifting handle.

Operate the lowering handle until bearing components are lowered down to the bottom position, then release the handle.

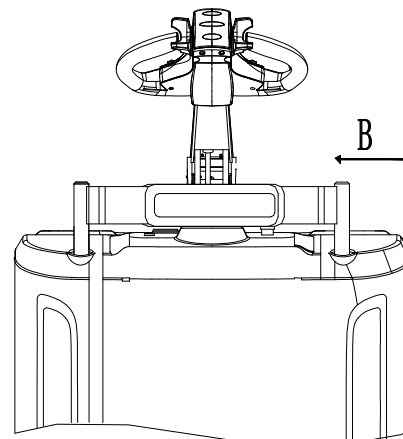
Notice: Safety arm should always be enabled during driving to protect the driver against accidents.



1.1

Figure 1.1

As shown in Figure 1.1, turn the protection arm 90° to A direction (outward) to enable safety arm.



1.2

Figure 1.2

As shown in Figure 1.2, turn the protection arm 90° to B direction (inward) to disable safety arm.

Park the forklift safely according to regulations

Notice: Forklift should always be parked according to the regulations. It should never be parked on slopes. Its bearing components should be lowered completely.

- Operate the lowering handle to lower the bearing components.
- Turn the switch key leftward to stop position and remove the key.
- Press down the Emergency stop switch.

4. Operation and Maintenance of Battery and Charger

Forklift should be parked properly before operating the battery.

Safety operation provisions for acid battery:

●Charging, maintenance and replacement of battery should only be carried out by specially trained technicians. During of operation, operator should strictly abide by this operation instruction and related regulations of the manufacturer of battery charging station.

●Do not smoke or use open flame around battery. Do not put combustible materials or devices that may produce spark within 2m at least around the forklift to be recharged. Good ventilation should be provided in the workplace. Fire-fighting equipment must be prepared properly.

●Battery cover should be kept dry and clean. Terminals and lug plates should be kept tightened, clean and applied with small amount of special grease. If the poles of battery are not insulated, a slip-proof insulation pad should be covered on each of them.

●Metal or conductive objects should not be put on battery to avoid short-circuit of battery.

●Ensure the cables of battery are not damaged before close the battery cover.

●Acid liquor inside the battery is toxic and corrosive. Therefore, always wear protective clothing and glasses before any operation of battery. Never contact battery acid liquid directly. If the liquid happens to contact with clothes, skin or eye, flush the affected area with plenty of water immediately. Skin and eye affection should be cared by doctor in time. Spilled acid liquid should be neutralized immediately.

●Battery should only be used when its cover is closed.

● Weight and size of battery is very important for safety operation of forklift. Replacement of battery should be approved by the factory in advance.

4.1 Use of charger

The charger used in this forklift has excellent constant current property and very fast overcurrent protection ability. It automatically stabilize the output current under voltage fluctuation.

Float-charging device can effectively prevent overcharging. Whether the temperature of battery changes notably or not during charging, electrolyte will remain clear, prolonging battery's service life.

4.2 Battery charging

- Park the forklift according to regulations.
- Take off battery cover, and remove power plug of battery..
- Connect the plug of charger to the power plug of battery, and start the charger to charge the battery.
- Turn off the charger power supply after charging, remove the charger plug, and then plug the battery power plug into the socket on forklift body.

Notice:

- Maintain good ventilation during charging. Smoking or open fire are strictly forbidden.
- All cable connections and plug connectors should be checked for notable damage before starting charging.
- Battery should be maintained after charging to check the acidity inside and if acid consumption of battery exceeds normal value.
- Use gravitometer to measure the gravity of electrolyte and adjust the ratio between acid liquid and distilled water as temperature changes.
- Do not add water into battery.
- Confirm the power connection status of charger before connection or disconnection of charger.
- Relevant safety regulations from battery and charging station manufacturers must be observed strictly.

4.3 Battery replacement:

Please follow these steps to replace battery:

Park the forklift according to regulations

Remove the battery cover ①, unscrew the rubber handle sleeve ②, then remove the two sets of safety arms ③, use the cross screwdriver to remove the screws on shell ④ and remove shell ④ . Now you can see two M8 screws and the M8 nut behind fixing the battery⑤, at this point, use a hexagon spanner and a hexagon socket spanner together for disassembly.

Remove the plug and put away the battery cable. Ensure that battery does not cut

other components when taking it out;

Lift the battery with a crane and replace it.

Install the battery in reverse order. Take note of the installation position and wiring of battery. Arrange the cables properly to avoid cutting when putting in battery.

Notice:

- Battery is very heavy, so please be carefully when handling it.
- Forklift should be parked horizontally. In order to avoid short circuit, use a rubber insulation pad to cover the exposed electrodes or connectors on the battery.
- If lifting devices are used in battery handling, it should have sufficient loading capacity. Tension in lifting device should be vertical. Never let the hook of lifting device fall onto battery.

5. Maintenance Guideline

5.1 Operational safety and environmental protection

All inspection and maintenance operations should be carried out according to “Maintenance and Inspection” Section.

Never modify the forklift, especially the safety devices. Never change any working speed of forklift.

Only original spare parts meet the quality management requirements of the factory. In order to ensure stable and reliable operation performance of equipment, please use only original spare parts. Aged parts and waste liquid medium should be disposed in accordance with effective environmental protection regulations. If hydraulic oil needs to be replaced, contact our after-sales service department.

After the inspection and maintenance operation, operation steps specified in the “Re-Commissioning Operation” Section should be carried out.

5.2 Safety stipulations on maintenance and servicing

Maintenance personnel: Forklift maintenance and repair can only be carried out by professional technical personnel of the factory. We have a team of field service technicians in our service department. They had been specially trained and are qualified for all maintenance work of the equipment. We suggest user sign a servicing contract with our service agent.

Equipment lifting and jacking: Lifting tools should be fixed on specified positions when lifting the forklift. When jacking the forklift, appropriate tools should be used, such as, wedge blocks, wood blocks, etc., to keep the equipment in place, avoiding accidental rolling or turnover. If operation should be conducted under the lifted fork, use chains with sufficient strength to fix the fork.

Cleaning operation: The forklift should not be cleaned with combustible liquid. Before cleaning, all necessary safety precautions should be taken to prevent spark creation (such as short circuit) during operation. The battery plug should be pulled out if forklift is powered by battery. When cleaning electrical and electronic components, use low-intensity suction gas or compressed air, together with non-conductive, anti-static brush to clean dust on component surface.

If you use water or high pressure cleaner to clean forklift, cover all electric and electronic components before hand, otherwise they will be affected by moisture, resulting malfunction. Do not use steam flow to clean the equipment.

After cleaning operation, the operation steps specified in the “Re-Commissioning Operation” Section should be carried out.

Operation of electric system: Operations related to electric system should be performed by professionals trained in electric technology. Before operation, operator should take all necessary measures to prevent electric accident. If forklift is powered by battery, the battery plug should be pulled out to release voltage of the forklift.

Welding operation: Remove all electric and electronic components on forklift before welding operation to avoid any accidental damage to these components during operation.

Specified parameters: Specified parameters related to forklift should be observed when repairing and replacing hydraulic, electric and electronic components.

Forklift wheels: Quality of wheel directly affects stability and driving performance of the equipment. If you need to replace the wheels that are assembled in plant, use only original spare parts provided by the factory to meet parameter requirements on the model list. When changing the wheels, be sure to not tilt the forklift (for example, change the left and right wheel at the same time).

Lifting chain: Insufficient lubrication will speed up wear of lifting chain. Interval time specified in the maintenance checklist is only suitable for normal operation. If intensity of operating conditions is higher than general level, for example, more dust, greater temperature fluctuation, frequency of lubrication operation should be increased. Use specified chain spray as required. Ideal lubrication effect cannot be achieved if lubricating grease is only applied outside the chain.

High-pressure hose in hydraulic system: High-pressure hose should upon service life expiration. If any hydraulic components are replaced, high-pressure hose should also be replaced.

5.3 Maintenance and inspection

Forklift should be checked regularly for wear, fatigue and damage of parts and to identify potential risks before they cause severe damage.

Battery is the energy source of forklift and can provide sufficient electric energy according to corresponding directives. Enduring battery can keep machine in best condition..

Daily inspection

Check whether the battery is charged fully (can be checked on side end

surface of battery).

Lift the fork to the top position to check whether the hydraulic oil in the hydraulic system is sufficient. If necessary, fill YA-N32 hydraulic oil or similar hydraulic oil.

Weekly inspection

Forklift user should spend a few minutes to clean the machine every week. In particular, the entanglement on wheels and axles such as silk, linen, and cloth wastes should be removed.

Half -year inspection

Apply lubricating oil on lifting chain and check its wear condition.

Check and tighten potential loose screws, nuts, and cable connections of battery.

Check the wear condition of brush in hydraulic pump motor and replace failed brush.

5.4 Replacement of oil in hydraulic system

We recommended to replace hydraulic oil after a month (or 200 hours) of machine operation, or after a year anyway.. Please use YA-N32 hydraulic oil or similar oil. The oil used should be filtered and cleaned hydraulic oil, and be sufficient in quantity. Lift the fork 2~3 times and bleed the trapped air in system, the equipment shall be able to function well again. If lifting height of fork does not meet requirement, refill hydraulic oil.

5.5 Re-commissioning

After cleaning or maintenance, the following operations should be performed before re-commissioning forklift:

- Check the function of multiple valve
- Check the function of main switch
- Check the function of brake
- Lubricate the forklift according to maintenance instructions

6. Carrying and Warehousing

The forklift must be stored in a dry space without frost if it is not used for 2 months. Operations to be executed before, after and during storage are to be described in the following sections.

In the process of storage, the forklift must be raised with a stand and all wheels must be elevated from the ground. Only in this way can the wheel and wheel bearing be protected from damage during storage.

If the storage time exceeds 6 months, users must contact service department of our company to define other measures as required.

6.1 Precautions before storage:

- Place forklift in the horizontal position to prevent the hydraulic oil and

electrolyte from overflowing.

- Clean the forklift completely
- Check the brake
- Check hydraulic oil level. Add hydraulic oil as needed
- Apply a thin layer of lubricant or grease to all mechanical parts subjecting to no surface treatment.
- Lubricate forklift according to related maintenance information
- Charge the accumulator
- Remove wiring terminal on the accumulator;clean accumulator, and apply special grease to the electrode bolt.

Please follow operation instructions and regulations of accumulator manufacturer at the same time.

Appropriate contact spray shall be sprayed on all exposed contact CDD-Hes.

6.2 Precautions during storage:

If forklift is driven by accumulator:

The accumulator must be charged on monthly basis;otherwise, it may result in low electricity level, vulcanization and failure to the accumulator if auto discharge is up to certain degree.

6.3 Re-commissioning after storage:

- Clean the forklift completely
- Lubricate forklift according to maintenance instructions
- Clean the accumulator, apply professional grease to the electrode bolt, and install and properly fix wiring terminal of accumulator.
- Charge the accumulator
- Check if there is any condensate water in gear oil. Replace gear shaft if necessary.
- Check if hydraulic oil contains condensate water. Replace hydraulic oil if necessary.
- Put forklift into use

If forklift is driven by accumulator:

If switch of electrical system is difficult for operation, the contact spray shall be sprayed on the exposed contact surface, and oxidation layer of the operating element contact surface shall be removed by means of repeated operation of the switch.

After the forklift is put into use, the driver is requested to repeatedly test braking performance repeatedly in time.

6.4 Safety inspection for forklift on a regular basis or during abnormal condition

Safety inspection is to be carried out according to corresponding national regulations. We can dispatch trained professionals to provide considerable safety inspection services for customers.

Forklift must be inspected by professionals at least once a year (pay attention to national regulations) or after abnormal condition. Inspectors shall verify and evaluate equipment performance and status in an objective and accurate manner by taking safe operation as the start point. Inspectors shall command sufficient professional knowledge and working experience, and shall be capable in judging equipment status and normal performance of protective device according to technical regulations and inspection standards for forklift in force.

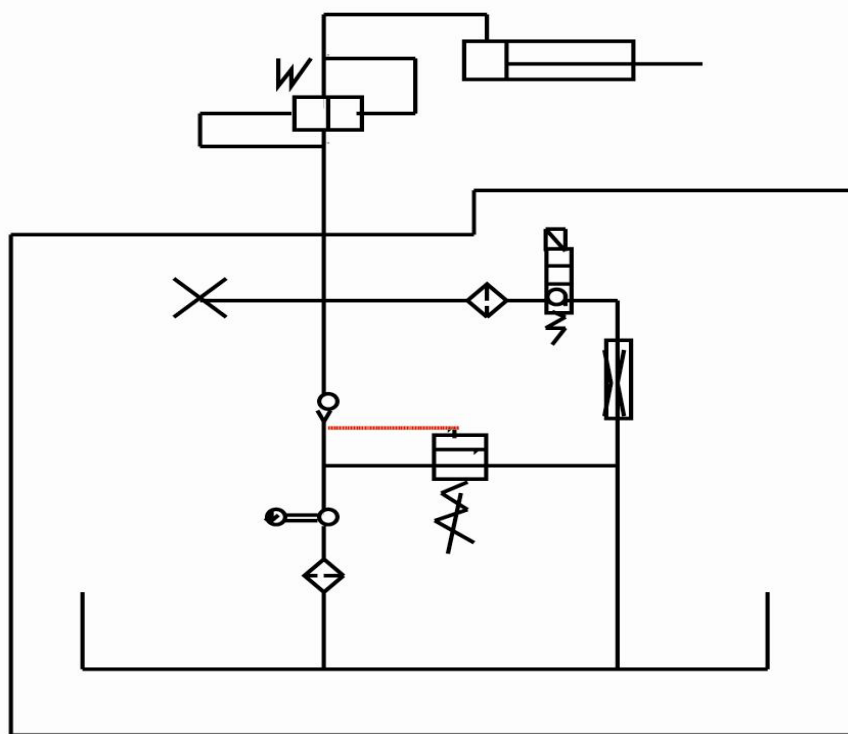
Carry out comprehensive inspection for safety performance of the forklift in case of accidents. Furthermore, it is also necessary to thoroughly check for any damage as incurred by improper use to the forklift. Inspectors must carefully record the process of inspection and relevant data. The results must be maintained at least until the next check operation. The equipment user must take necessary measures to solve problems as discovered in time.

6.5 Equipment scrapping and waste disposal methods

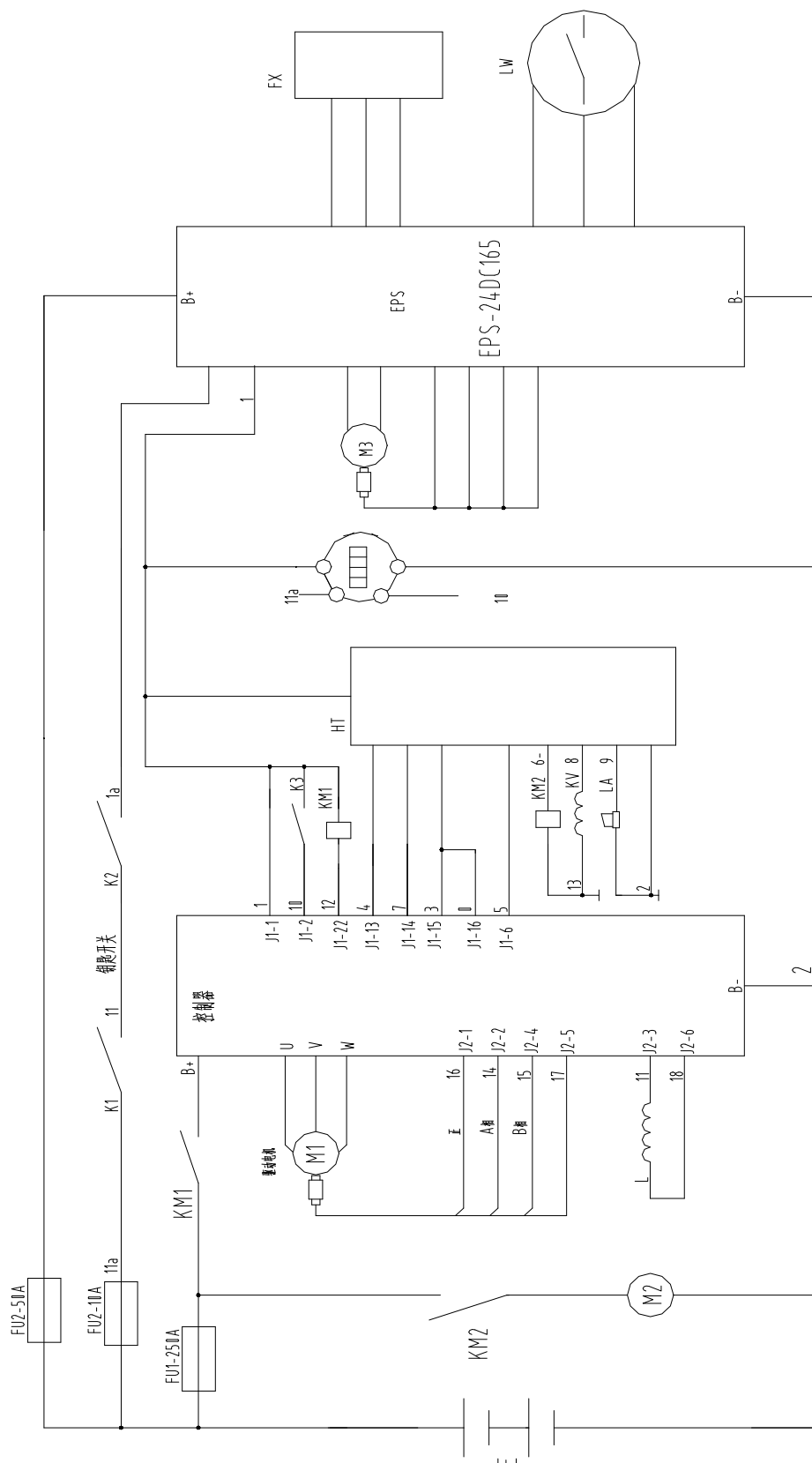
The final scrapping and waste disposal of forklift must be carried out in accordance with Chinese laws and regulations in force.

In particular, also it is also necessary to pay attention to provisions related to the disposal of waste batteries, fuel and electronic and electrical equipment, as well as local environmental protection provisions.

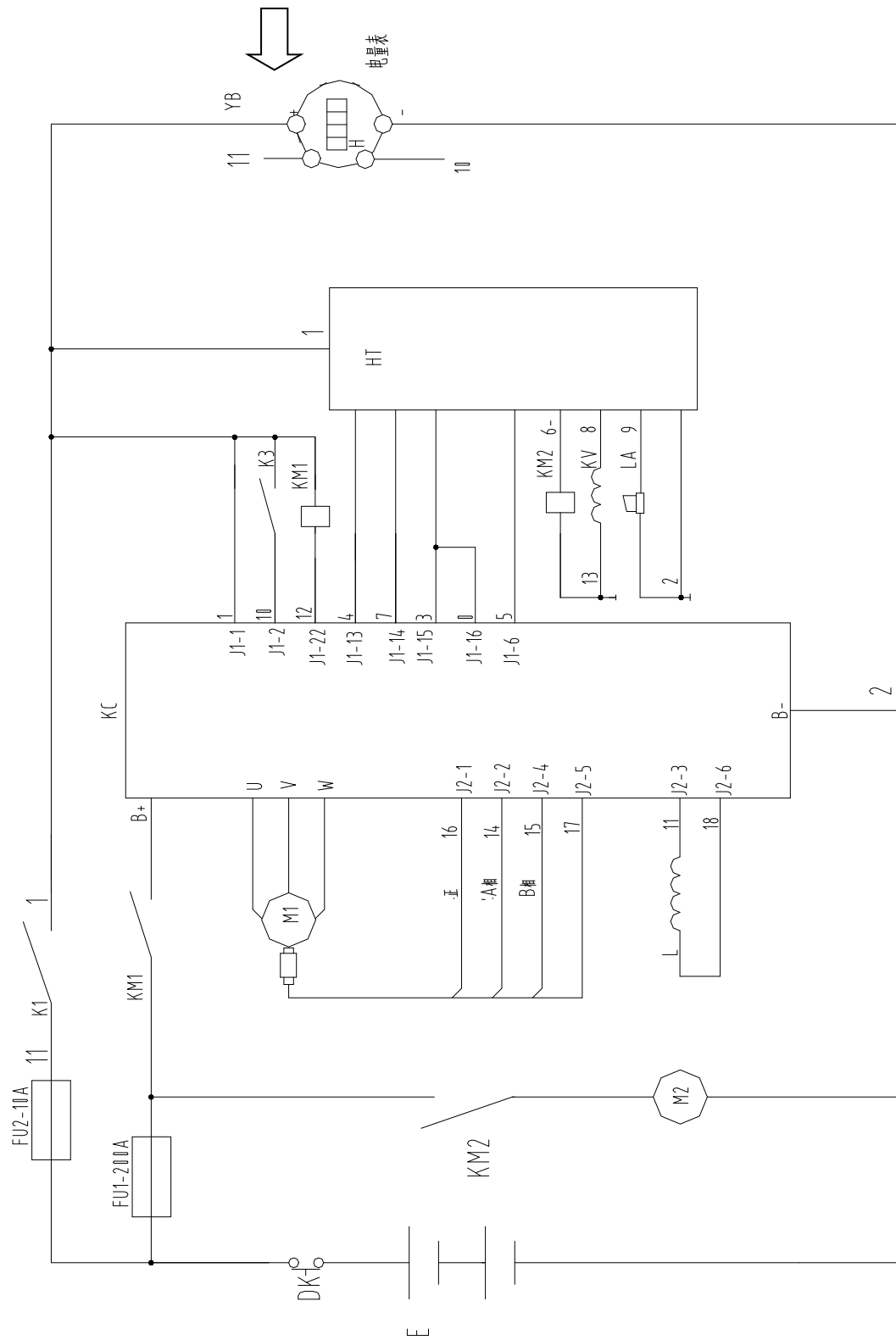
7. Schematic Diagram



8. Electrical Schematic Diagram



9. Hydraulic Schematic Diagram



No.	Name	Quantity	Unit	Unit
1	Key	2	Set	Pc.
2	Charge holder	1	Set	Pc.
3	Fuse 10A	1	Set	Pc.
4	Fuse 160A	1	Set	Pc.
5	Seal UHS40*50*5	1	Pc.	Pc.
6	O type seal 43.7X3.55	1	Pc.	Pc.
7	O type seal 28X1.8	1	Pc.	Pc.
8	Dust proof	1	Pc.	Pc.

10. Quick wear parts

Note: no warranty for quick-wear parts; one-year warranty for complete machine.