



COMPACTOR

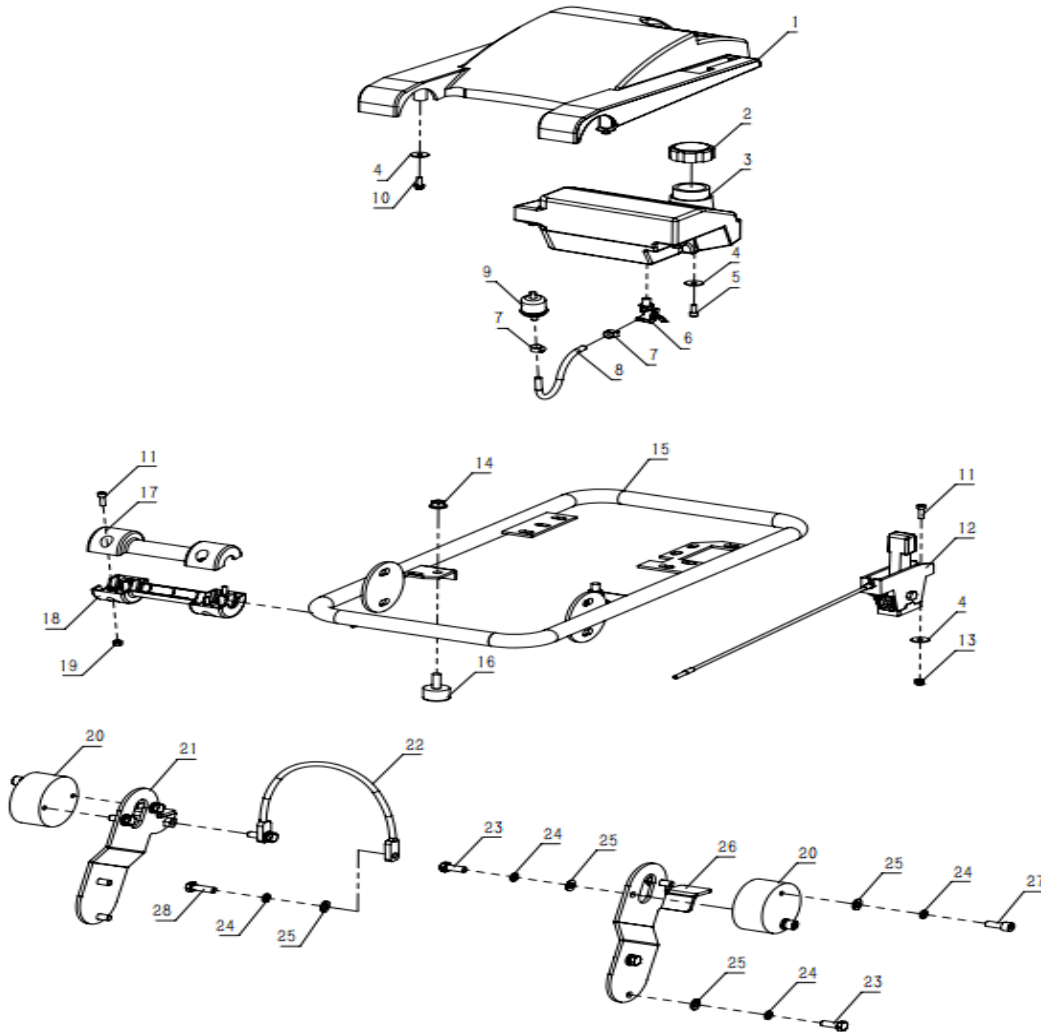
SIMAQ SQ60PRO2



PART LIST

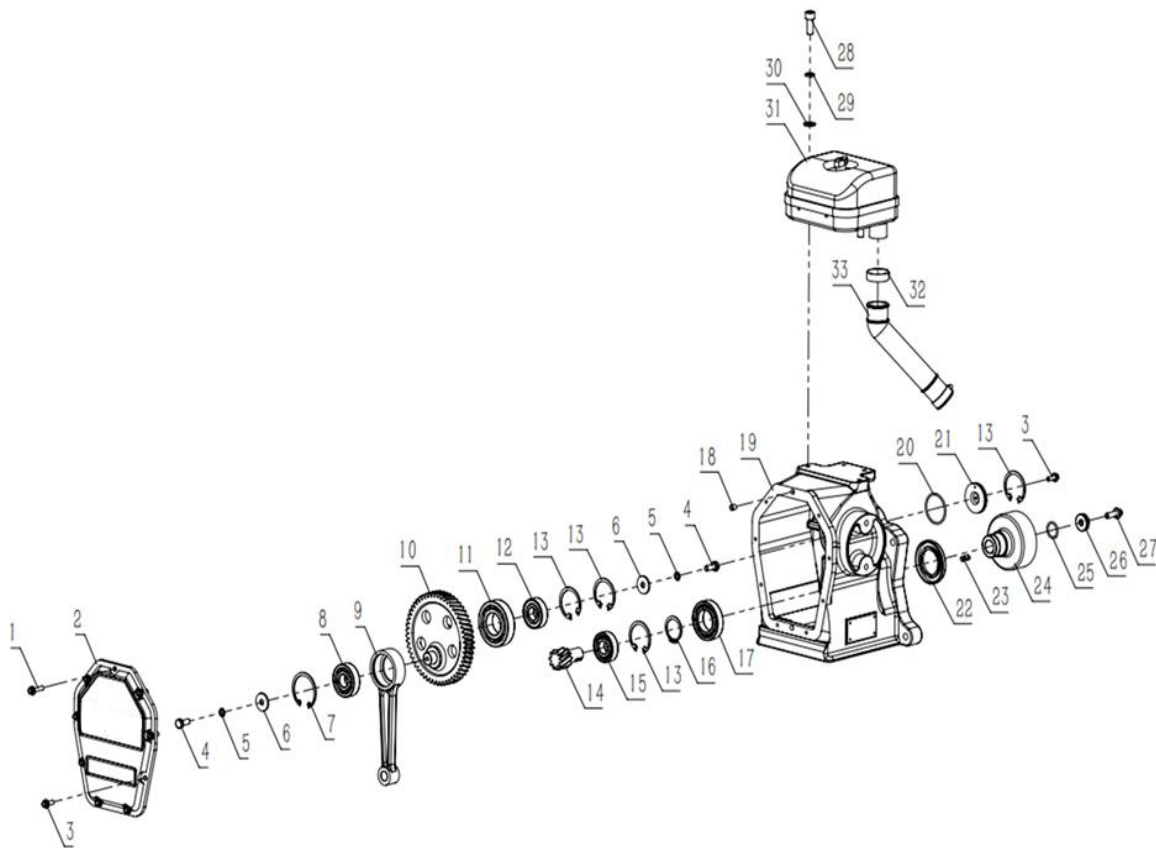
SQ60PRO RAMMER PARTS LIST

1) Protection Frame Assembly



1	Protection Frame Assembly		
Item No.	Description	Remark	Qty
1-1	Plastic Cover		1
1-2	Fuel Tank Cap		1
1-3	Fuel Tank		1
1-4	Flat Washer	φ6	10
1-5	Hex Socket Head Bolt	M6*16-8.8	4
1-6	Fuel Valve		1
1-7	Fuel Hose Clamp		2
1-8	Fuel Hose		1
1-9	Fuel Filter		1
1-10	Hex Flange Bolt	M6*16-8.8	4
1-11	Hex Socket Head Bolt	M6*20-8.8	6
1-12	Throttle lever		1
1-13	Hex Lock Nut	M6	2
1-14	Hex Flange Nut	M10	2
1-15	Handle Frame		1
1-16	Small Bumper		2
1-17	Plastic Handle 1		1
1-18	Plastic Handle 2		1
1-19	Hex Nut	M6	4
1-20	Shock Absorber		2
1-21	Right Side Plate		1
1-22	Lifting cable		1
1-23	Hex Bolt	M10*25-8.8	8
1-24	Spring Washer	φ10	14
1-25	Flat Washer	φ10	14
1-26	Left Side Plate		1
1-27	Hex Socket Head Bolt	M10*25-8.8	4
1-28	Hex Bolt	M10*30-8.8	2

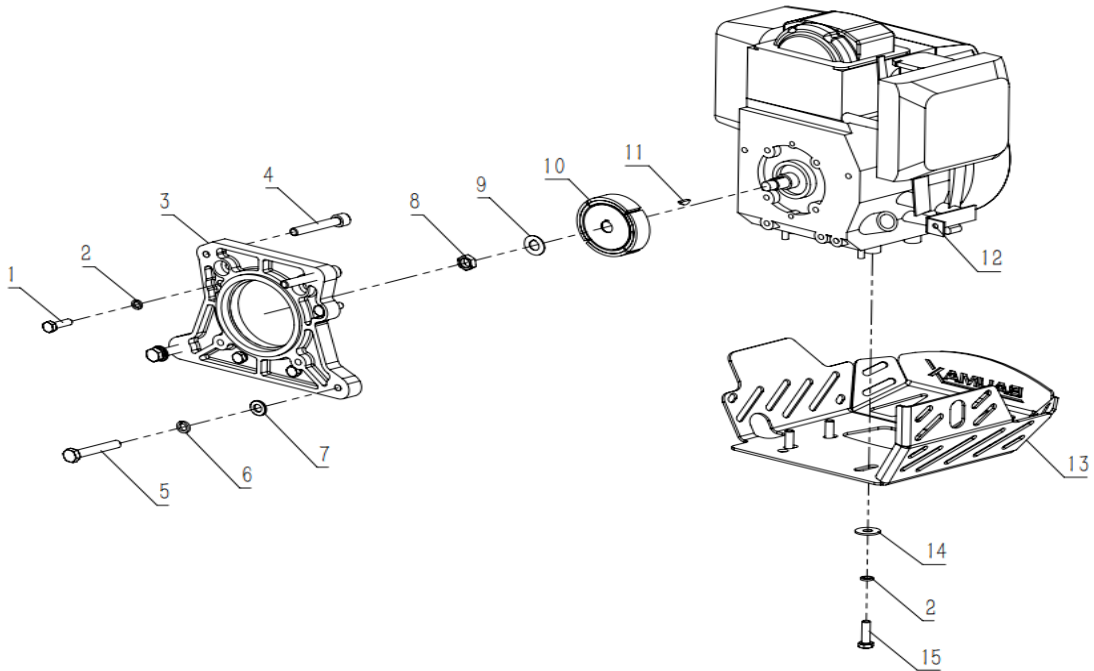
2) Case Assembly



2	Case Assembly		
Item No.	Description	Remark	Qty
2-1	Hex Flange Bolt	M6*25-8.8	1
2-2	Case Cover		1
2-3	Hex Flange Bolt	M6*16-8.8	9
2-4	Hex Bolt	M8*20-8.8	2
2-5	Spring Washer	φ8	2
2-6	Flat Washer	φ8	2
2-7	Circlip ring	φ52	1

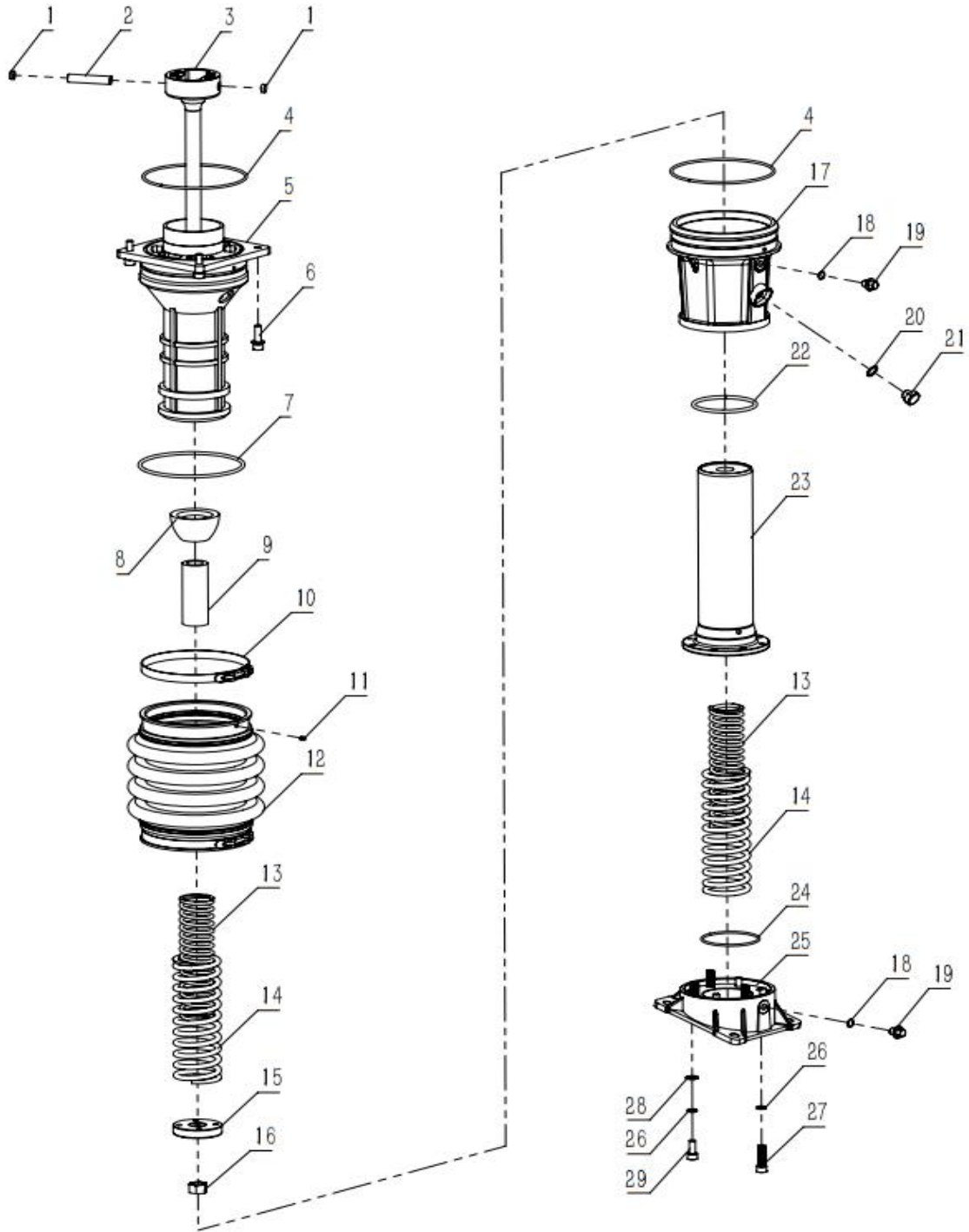
2-8	Bearing	6304	1
2-9	Connecting Rod		1
2-10	Crankshaft Gear		1
2-11	Bearing	6207	1
2-12	Bearing	6204-2Z	1
2-13	Circlip ring	φ47	4
2-14	Pinion Gear		1
2-15	Bearing	6204	1
2-16	Circlip	φ35	1
2-17	Bearing	6007-Z	1
2-18	Pin	φ8*6	1
2-19	Gear box housing		1
2-20	O-Ring	43.7*1.8	1
2-21	Dust Cover		1
2-22	Oil Seal	40*68*8	1
2-23	Flat Key	5*20	1
2-24	Clutch drum		1
2-25	O-Ring	22.4*2.65	1
2-26	Liner Gasket		1
2-27	Hex Flange Bolt	M8*25-8.8	1
2-28	Hex Socket Head Bolt	M10*25-8.8	4
2-29	Spring Washer	φ10	4
2-30	Flat Washer	φ10	4
2-31	Pre Air Filter Assy.		1
2-32	Clamp		2
2-33	Air Filter hose		1

3) Engine Assembly



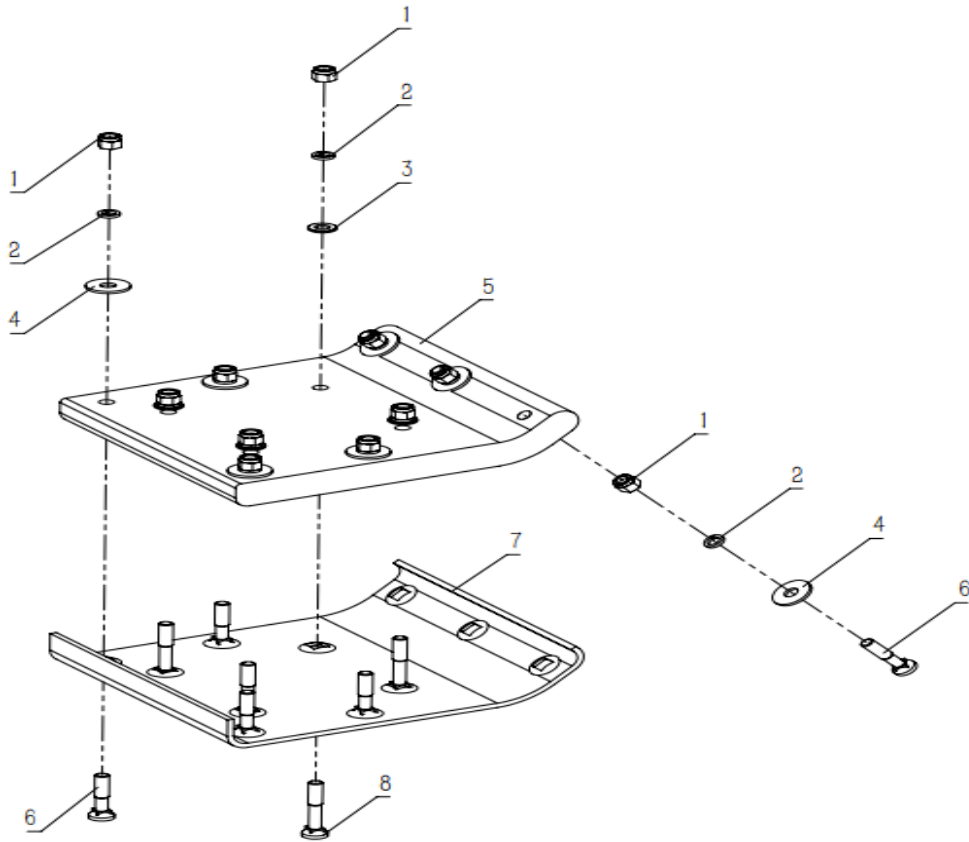
3	Engine Assembly		
Item No.	Description	Remark	Qty
3-1	Hex Bolt	M8*25-8.8	4
3-2	Spring Washer	φ8	8
3-3	Engine Connecting Plate		1
3-4	Hex Socket Head Bolt	M10*60-8.8	2
3-5	Hex Bolt	M10*60-8.8	2
3-6	Spring Washer	φ10	2
3-7	Flat Washer	φ10	2
3-8	Hex Thin Nut	M12	1
3-9	Lock Washer		1
3-10	Clutch	φ15	1
3-11	Woodruff Key	4mm	1
3-12	GXR120 Engine		1
3-13	Engine Guard		1
3-14	Flat Washer	φ8	4
3-15	Hex Bolt	M8*30-8.8	4

4) Base Assembly



4	Base Assembly		
Item No.	Description	Remark	Qty
4-1	Nylon Plug		2
4-2	Piston Pin		1
4-3	Center Shaft		1
4-4	O-Ring	160×4	2
4-5	Outer Cylinder		1
4-6	Hex Socket Head Bolt	M10×35-12.9	4
4-7	O-Ring	160×5.3	1
4-8	Buffer Block		1
4-9	Center Sleeve		1
4-10	Clamp Assembly		2
4-11	Cylindrical Pin	6×8	2
4-12	Bellow		1
4-13	Inner Spring		2
4-14	Outer Spring		2
4-15	Spacer		1
4-16	Hex Fine-Thread Nut	M18×1.5	1
4-17	Aluminum Sleeve		1
4-18	Copper Washer	φ12	2
4-19	Drain Plug Bolt	M12×24×1.25	2
4-20	Copper Washer	φ16	1
4-21	Oil guage	M16×10×1.5	1
4-22	O-Ring	105×5.7	1
4-23	Inner Cylinder		1
4-24	O-Ring	87.5×3.55	1
4-25	Inclined Base		1
4-26	Spring Washer	φ10	8
4-27	Hex Socket Head Bolt	M10×40-12.9	4
4-28	Flat Washer	φ10	4
4-29	Hex Socket Head Bolt	M10×25-12.9	4

5) Rammer Shoe Assembly



5	Rammer Shoe Assembly		1
Item No.	Description	Remark	Qty
5-1	Hex Lock Nut	M12	11
5-2	Spring Washer	φ12	11
5-3	Flat Washer	φ12	4
5-4	Large Flat Washer	φ12	7
5-5	Base Plate		1
5-6	Bolt	M12×60-12.9	7
5-7	Base shoe		1
5-8	Bolt	M12×75-12.9	2