

CONCRETE MIXER

SIMAQ SQREVG365LTS



OPERATING INFORMATION

FOR YOUR SAFETY
**READ AND UNDERSTAND THE ENTIRE MANUAL BEFORE
OPERATING MACHINE**

ASSEMBLY OF THE CEMENT MIXER

This mixer is simple to assembly.

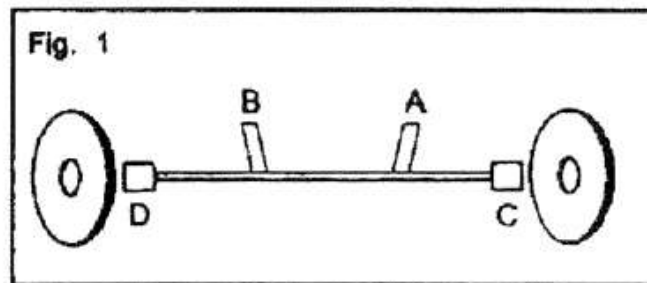
Please follow the following steps after you have finished unpacking and checking.

STEP 1

Attach the two wheels (Part #56) to the Wheel Axle (Part # 57) with bolts and nuts supplied. Pls refer to Fig 1.

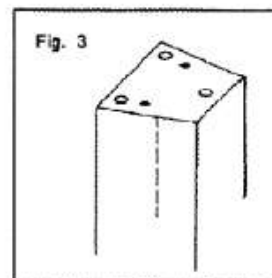
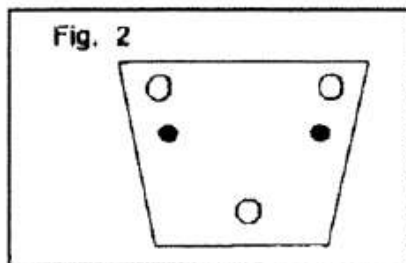
STEP 2

Attach the Wheel Shaft and Wheel Assembly to the main body by bolting part A and B. Pls refer to Fig 1.



STEP

Attach the Leg to the front of the Frame Assembly with 3 nuts. Make sure the bolts in the leg align to the holes in the end of Frame Assembly. Pls refer to FIG 2 and FIG 3.



Remarks: Pls make sure to tighten all nuts with enough strength.

A shop crane may be needed during the assembly.

SPECIFICATIONS TABLE

Item	Description
Weight	200-400kg
Drum Diameter	700\800\900mm
Pneumatic Wheel Diameter	400\500mm

Engine HP	5.0-9.0 HP
Gas Engine Speed	3600 RPM
Drum Speeds	16RPM ~22RPM

SAVE THIS MANUAL

You will need this manual for the safety warnings and precautions, operating, maintenance and cleaning procedures, parts list and assembly diagram. Keep your invoice with this manual. Write the invoice number on the inside of the front cover. Keep this manual and invoice in a safe and dry place for future reference.

SAVE WARNINGS AND PRECAUTIONS

1. **KEEP WORK AREA CLEAN.** Cluttered work areas invite injuries.
2. **KEEP CHILDREN AWAY FROM WORK AREA.** Do not allow children to handle this product and to play near product.
3. **STORE INLE EQUIPMENT.** When not in use, tools and equipment should be stored in a dry location to inhibit rust. Always lock up tools and equipment and keep out of reach of children.
4. **DO NOT USE THIS PRODUCT IF UNDER THE INFLUENCE OF ALCOHOL OR DRUGS.** Read warning labels on prescriptions to determine if your judgment or reflexes are impaired while taking drugs. If there is any doubt, do not attempt to use this tool.
5. **USE EYE, HEARING, AND DUST PROTECTION.** Wear approved safety impact eye glasses, approved hearing protection, and approved dust protection when working with this product.
6. **DRESS SAFETY.** Non-skid footwear or safety shoes should be used when working with this product. Do not wear loose clothing or jewelry as they can become caught in moving parts. Wear a protective hair covering to prevent long hair from becoming caught in moving parts.
7. **INDUSTRIAL APPLICATIONS MUST FOLLOW OSHA REQUIREMENTS**
8. **DO NOT OVERREACH.** Keep proper footing and balance at all times to prevent tripping, falling, back injury, etcetera.
9. **STAY ALERT.** Watch what you are doing at all times. Use common sense. Do not use this tool when you are tired or distracted from the job at hand.
10. **CHECK FOR DAMAGED PARTS.** Before using this product, carefully check that this tool will operate properly and perform its intended function. Check

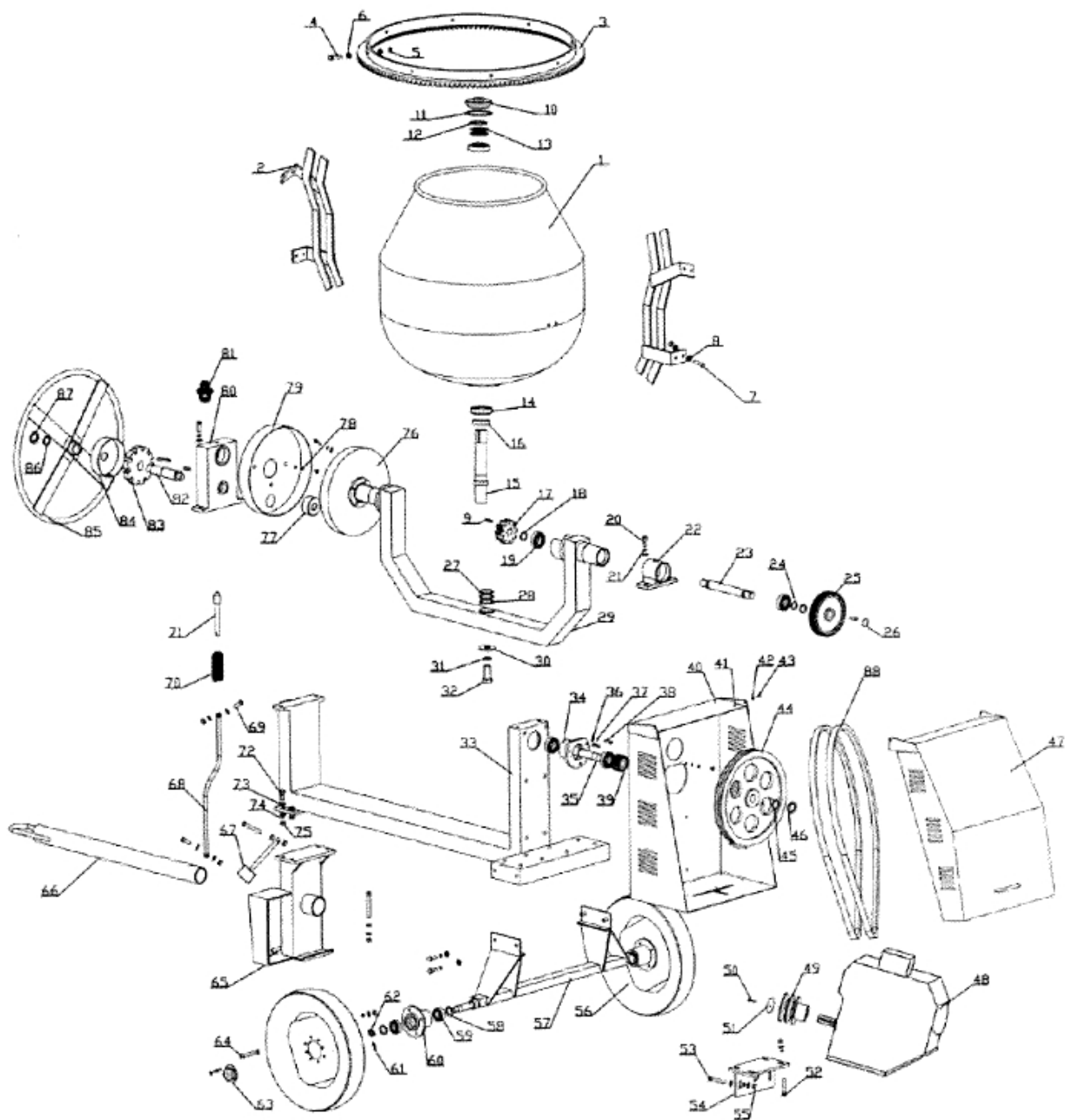
for damaged parts and any other conditions that may affect the operation of this tool. Replace or repair damaged or worn parts immediately.

11. **REPLACEMENT PARTS AND ACCESSORIES.** When servicing, use only identical replacement parts. Only use accessories intended for use with this product.
12. **MAINTAIN THIS PRODUCT WITH CARE.** Keep this tool clean and dry for better and safer performance.
13. **MAINTENANCE.** For your safety, service and maintenance should be performed regularly by a qualified technician.
14. **USE THE RIGHT PRODUCT FOR THE RIGHT JOB.** There are certain applications for which this product was designed. Do not use a small tool or attachment to do the work of a larger industrial tool or attachment. Do not use this product for a purpose for which it was not intended.

SPECIFIC PRODUCT WARNINGS AND PRECAUTIONS

1. **CAUTION: NEVER PERFORM ANY SERVICES OR MAINTENANCE OR MOVE THE CEMENT MIXER WHILE IT IS RUNNING. BEFORE PERFORMING SERVICES, MAINTENANCE, OR MOVING THE CEMENT MIXER, TURN OFF THE GAS ENGINE (PART #48) AND DISCONNECT THE SPARK PLUGWIRE TO PREVENT ACCIDENTAL STARTING.**
2. **PRIOR TO USING TH CEMENT MIXER, MAKE SURE YOU READ AND COMPLETELY UNDERSTAND THIS INSTRUCTION MANUAL AND THE GAS ENGINE MANUAL CTURER'S INSTRUCTION MANUAL.**

ASSEMBLY DIAGRAM



NOTE: Some parts are listed and shown for illustration purposes only, and are not available individually as replacement parts.

Parts List

Item #	Description	Qty	Item #	Description	Qty
1	Drum	1	45	Flat gasket $\Phi 30$	1
2	Mixing Blade	2	46	Nut M30	1
3	Gear ring	1	47	Upper belt cover	1
4	Hex bolt M8X25	8	48	Gasoline engine	1

5	Nut M8	28	49	Small belt wheel	1
6	Washer M8	30	50	Bolt M8X25	1
7	Thumb screw M8	8	51	Washer $\Phi 9 \times \Phi 30 \times 2$	1
8	Aluminum spacer M8	8	52	Bolt $\Phi M8 \times 50$	4
9	Bolt	4	53	Hex bolt M10X30	6
10	Bearing cap	1	54	Engine plate	1
11	O seal ring	1	55	Nut M10	6
12	Round nut M45	2	56	Tire	2
13	Lock washer	1	57	Wheel axle	1
14	Tapered roller bearing 30209	2	58	Washer	2
15	Spindle	1	59	Bearing 60205	2
16	Seal ring	1	60	Wheel axle cover	2
17	Bevel pinion	1	61	Cotter $\Phi 5$	2
18	Washer $\Phi 28$	2	62	Slot nut M22	2
19	Bearing 60206	4	63	Cover	2
20	Nut M8X30	6	64	Hex bolt M10X30	4
21	Spring washer M8	10	65	Lower stand	1
22	Shaft block	1	66	Towing rod	1
23	Driving shaft	1	67	Pedaling rod	1
24	Outside caliper $\Phi 30$	1	68	Pulling bar	1
25	Outside big gear	1	69	Bolt M8X25	2
26	Outside caliper $\Phi 28$	1	70	Spring	1
27	Washer $\Phi 45 \times \Phi 63 \times 1.5$	2	71	Positioning rod	1
28	Washer $\Phi 45 \times \Phi 63 \times 2$	1	72	Bolt M12X30	8
29	Bent pipe	1	73	Flat gasket M12	14
30	Big washer $\Phi 45$	1	74	Spring spacer M8	8
31	Spring spacer M24	1	75	Nut M8	8
32	Hex bolt M24X40	1	76	Inner gear disc	1
33	Beam frame	1	77	Small driving gear	1
34	Bearing cover	1	78	Spring spacer M6	17
35	Bearing	1	79	Inner gear disc shield	1
36	Flat gasket M10	16	80	Bar bearing block	1
37	Spring spacer M10	16	81	Oil filling nozzle M8	2
38	Hex bolt M10X30	6	82	Bar bearing	1
39	Pinion	1	83	Positioning disc	1
40	Lower belt cover	1	84	Positioning disc cover	1
41	Nut M6	2	85	Round handle	1
42	Flat gasket M6	19	86	Flat gasket $\Phi 28$	1
43	Philip's head screw M6X16	19	87	Nut M27	1
44	Belt wheel	1	88	A type belt	2

3. **USE COMMON SENSE WHEN HANDLING GASOLINE.** Transport fuel only in approved safety containers. Do not refuel the engine with the Engine running or while it is hot. Do not smoke when refueling the Engine. Wipe up any fuel spills on the Engine. Do not operate the Cement Mixer if there is evidence of a fuel leak. Do not operate the Cement Mixer in a poorly ventilated or enclosed area.

4. **KEEP ALL GUARDS IN PLACE AND IN PROPER WORKING CONDITION.**
5. **NEVER STICK YOUR HANDS AND/OR TOOLS INTO THE DRUM ASSEMBLY (PART#4) WHILE THE CEMENT MIXER IS IN OPERATION.**
6. **AVOID CONTACT WITH A HOT ENGINE AND ITS EXHAUST SYSTEM.**
Allow the Engine to cool before performing any services or maintenance.
7. **KEEP A SAFE CLEARANCE AROUND THE CEMENT MIXER.** Keep all people (except the operator) a minimum of six feet from the Mixer during operation.
8. **DO NOT OVERLOAD THE CEMENT MIXER.** An overload may damage the equipment.

UNPACKING

When unpacking, check to make sure all parts listed in the Parts Lists (Page 8) are included. Please turn to place of purchase as soon as possible.

OPERATING INSTRUCTIONS

NOTE: All parts below refer to the parts listed and shown on page 8 and 9 of this manual.

1. **CAUTION:** Do not attempt to move the Cement Mixer when it is full and/or in operation.
2. Place the Cement Mixer on a solid, flat, and level surface that is capable of supporting the weight of the mixer and its load.
3. Start the Engine (Part #48), and allow it to reach the appropriate operating temperature as instructed in the Engine manufacturer's operating manual.
4. **NOTE:** Filling and emptying the Drum (Part #1) is best done with the Drum rotating. Do not turn off the Cement Mixer while full of cement.
5. With the Drum (Part #1) operating between 20-36RPM, the Cement Mixer is now ready for the addition of the concrete mix.

6. To determine the proper amount of water, gravel, cement, and sand, refer to **As below:**

SAMPLE MIX VOLUME			
MIX VOLUME (CU. FT.)	3	4	6
Cement (Bags)	1/2	2/3	1
Water (Gal.)	2-1/2	3-1/2	5-1/4
Sand (Gal./Shovels)	9	12	18
Gravel (Gal./Shovels)	12	16	23
Mix volume may vary depending on aggregate used			

7. **For best results, proceed as follows:**
- A. Pour the required amount of water into the Drum (Part #1)**
 - B. Add the required amount of gravel into the Drum**
 - C. Add the required amount of cement in to the Drum.**
 - D. Add the required amount of sand into the Drum.**
8. Allow adequate time for the water, gravel, cement and sand to thoroughly mix.
9. To discharge the cement mix, grasp the round handle (Part #85) firmly with one hand and release the pedaling rod (Part #67). Then, slowly, turn the Hand Wheel counterclockwise to empty the Drum (Part #1). **CATUION:** To prevent accidental discharge of the cement mix, do not release the Brake Handle without holding the Hand Wheel firmly. Always make sure the Brake Handle is fully engaged after discharging the concrete mix and before refilling the Drum. **(See Assy. Diagram.)**
10. After discharging the cement mix, turn the round handle (Part #85) clockwise to return the Drum (Part #1) to its original position.
11. Repeat Steps #5-9 if more cement mix is required.
12. When finished, make sure to thoroughly clean the inside of the Drum (Part #1).

MAINTENANCE AND CLEANING

1. **CAUTION:** Never perform any services or maintenance on the Cement Mixer while it is running. Before performing services or maintenance, turn off the engine and disconnect the speak plug wire to prevent accidental starting.
2. Before each use, inspect the general condition of the Cement Mixer. Check for loose screws, misalignment, binding of moving parts, loose or broken

parts, and any other condition that may affect its safe operation. If abnormal noise or vibration occurs, turn off the Cement Mixer immediately and have the problem corrected before further use. Do not use damaged equipment.

3. Retighten the A-belt (part #88) after the first 24 hours of use. The A-belt should be able to be pressed in no more than 1/4". **(See Assy. Diagram.)**
4. Periodically, recheck all nuts, bolts and screws for tightness.
5. Thoroughly clean the Cement Mixer at the end of each day's operation. The Drum Assembly (Part #1) may be soured for approximately two minutes, using a gravel and water mixture. Then, discharge the gravel/water mixture and hose down the Drum Assembly inside and out. **(See Assy. Diagram.)**
6. Dried cement mixer should be scraped out of the Drum (Part #1). Do not beat on the Drum with a shovel or other tools to break up accumulations of dried cement mix, as damage to the Cement Mixer may result.
7. Do not pour or spray water over the Engine (Part#48). **(See Assy. Diagram.)**
8. Daily check the oil level in the Engine (Part#48). Refer to the Engine manufacturer's manual/ for the type and level of oil recommended, and all other Engine service and maintenance instructions.
9. Periodically, inspect the Wheel Bearings (Part #57) for proper lubrication. **(See Assy. Diagram.)**

PLEASE READ THE FOLLOWING CAREFULLY

The manufacturer and/or distributor have provided the parts diagram in this manual as a reference tool only. Neither the manufacturer nor distributor makes any representation or warranty of any kind to the buyer that he or she is qualified to make any repairs of the product. In fact, the manufacturer and/or distributor expressly states that all licensed technicians and not by the buyer. The buyer assumes all risk and liability arising out of his or her repairs to the original product or replacement parts thereto, or arising out of his or her installation of replacement parts thereto.